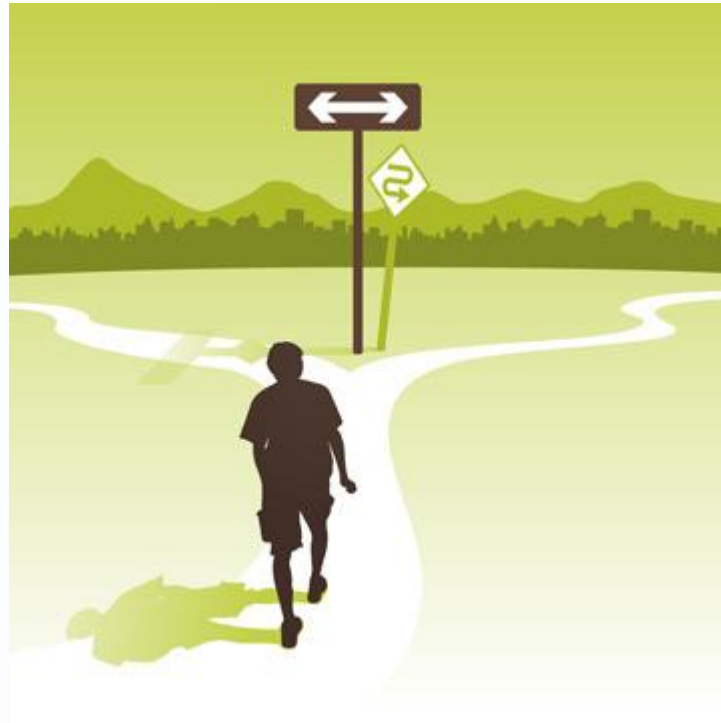




THE BRAKENHALE SCHOOL
High Expectations and Challenge for All

PATHWAYS TO POST-16 EDUCATION AT THE BRAKENHALE SCHOOL AND BEYOND 2016





School leaving age

► England

- You can leave school on the last Friday in June if you'll be 16 by the end of the summer holidays.
- You must then do one of the following until you're 18:
 - stay in full-time education, e.g. at a school or college
 - start an [apprenticeship](#) or [traineeship](#)
 - work or volunteer (for 20 hours or more a week) while in part-time education or training



THE BRAKENHALE SCHOOL

High Expectations and Challenge for All

What's next?

- ▶ **Level 2 courses** The equivalent of GCSEs. Coursework based, often combined with Maths/English re-sits, work experience, work skills
- ▶ **Level 3 courses** Beyond GCSE. These can be A-Levels or BTEC Level 3 courses (which can be a single award, double or even triple)



THE BRAKENHALE SCHOOL

High Expectations and Challenge for All

Level 2 Courses

- If your son/daughter achieves a set of GCSE grades that includes 'C's, 'D's, 'E's and 'F's a Level 2 course is probably the most suitable pathway



THE BRAKENHALE SCHOOL

High Expectations and Challenge for All

Why is this such a good option?

- This gives the students a chance to gain vocational skills – Business or ICT for example
- It will give students a chance to re-sit GCSE English and Maths
- Hopefully the provider will also make work experience a part of the offer giving students a strong position to make a competitive application for a good apprenticeship at the end of the year **OR** go onto Level 3 study



THE BRAKENHALE SCHOOL

High Expectations and Challenge for All

Level 2 Courses

- Examples of courses available locally are on the Bracknell and Wokingham College website however, courses such as Hair and Beauty, Childcare and Hospitality and Catering give you a flavour of the vocational nature of this pathway



THE BRAKENHALE SCHOOL

High Expectations and Challenge for All

Brakenhale Level 2

- We will have a Level 2 provision for the first time.
- Confirmation of exact courses to follow.
- Will include:
 - Business
 - IT
 - Workskills
 - Work experience
 - Re-sit English and Maths



THE BRAKENHALE SCHOOL

High Expectations and Challenge for All

Level 3 Courses (BTEC)

- For students achieving around 4 GCSE grades at A*-C the Level 3 BTEC programme is recommended
- BTEC- Applied Science, Performing Arts (Dance), Media, Sport, Business, ICT, Applied Law, Criminology, Music and Travel and Tourism are currently offered at Brakenhale



THE BRAKENHALE SCHOOL

High Expectations and Challenge for All

Why BTEC?

- It provides a continuous assessment process (alongside one examination) which suits many students developing independence, self-management and academic understanding
- It builds on the working patterns established at Key Stage 4 which so many of the young people in Year 11 have excelled at
- It maximises students chances for success allowing them to move on into employment or further study



THE BRAKENHALE SCHOOL

High Expectations and Challenge for All

Level 3 Courses (A-Levels)

- ▶ A-Levels at The Brakenhale School are available to all students who achieve 5 A* -C grades at GCSE (other institutions may differ)
- ▶ However specific entry requirements are required for each subject
- ▶ Some subjects stipulate multiple subject passes e.g. Psychology may ask for a C in Maths, C in Science and a B in English



THE BRAKENHALE SCHOOL

High Expectations and Challenge for All

Why are A-Levels such a good option?

- As a qualification it is internationally recognised by academics and employers alike
- It is the stepping stone to university and beyond
- It is academically rigorous and expands specialist knowledge but also develops personal skills such as organisation, time management and research techniques



THE BRAKENHALE SCHOOL

High Expectations and Challenge for All

AS and A2 examinations

- A very complex picture.....
- Some schools and colleges will be doing AS examinations and some schools won't
- Check individual prospectuses and subject information for confirmation!



THE BRAKENHALE SCHOOL

High Expectations and Challenge for All

Where do A-Levels lead?

- University is the most likely destination of students after the Brakenhale School
- A good package of A-Levels opens many employment opportunities with local and national employers. Recent examples include students going on to become accountants, solicitors clerks, electrical engineers, working with Vodafone or being taken on as an apprentice at 3M and Fujitsu



THE BRAKENHALE SCHOOL

High Expectations and Challenge for All

Why choose The Brakenhale School?

- A new, very experienced, leadership team driving excellence
- A new Sixth Form centre
- A new independent supervised study area
- A staff very much focused on improving KS5 student performance
- Small classes and individual care and support
- An excellent set of results in 2016



THE BRAKENHALE SCHOOL

High Expectations and Challenge for All

Why choose The Brakenhale School?

- The BTEC pass rate and retention rate are both very high indeed
- Value Added performance last year put the school in the top 8% of providers nationally



THE BRAKENHALE SCHOOL

High Expectations and Challenge for All

Come and find out more!

Sixth Form Open Evening
Tuesday 8th November 2016

